



Can Environmental Stress be Exploited for Biological Phosphorus Removal?

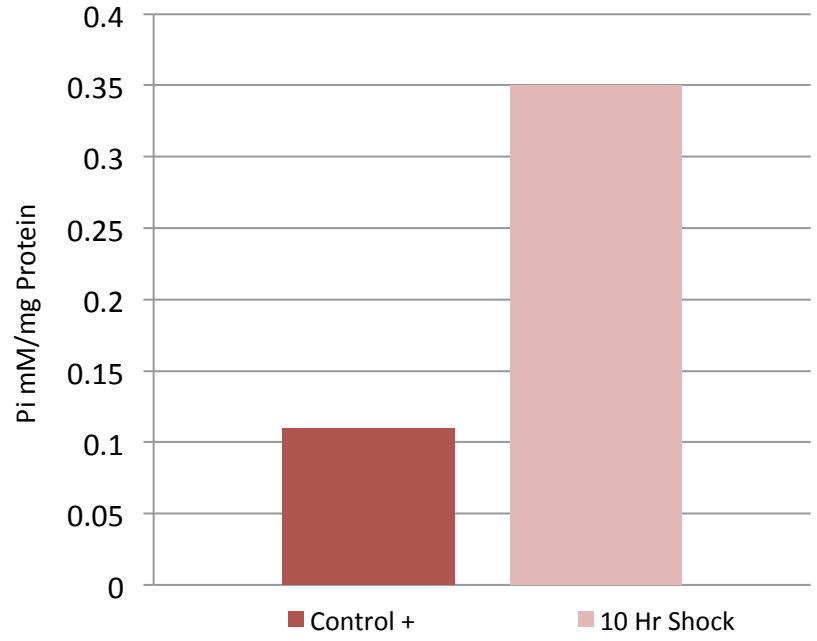
Darragh Hobbs, John W. McGrath and John P. Quinn

The School of Biological Sciences and the QUESTOR Centre, The Queen's University of Belfast, Medical Biology Centre, 97 Lisburn Rd, Belfast, BT9 7BL, Northern Ireland

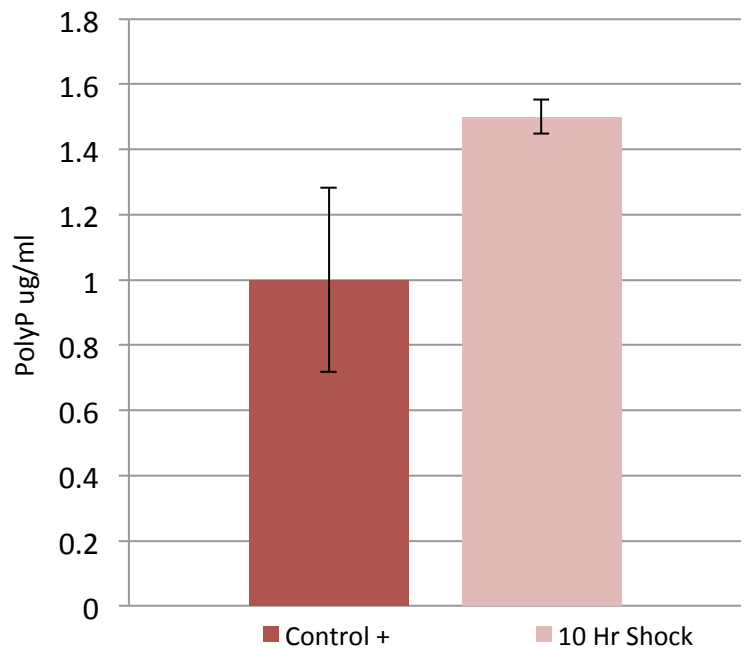
Supporting Results



Inorganic Phosphate (Pi) Removed by Polytox



PolyP Accumulated by Polytox



* Phosphate accumulated during the “outgrowth” phase



Key Attractions



Fully Aerobic
Stand Alone Trigger
Cost Effective and Reliable





Thank You